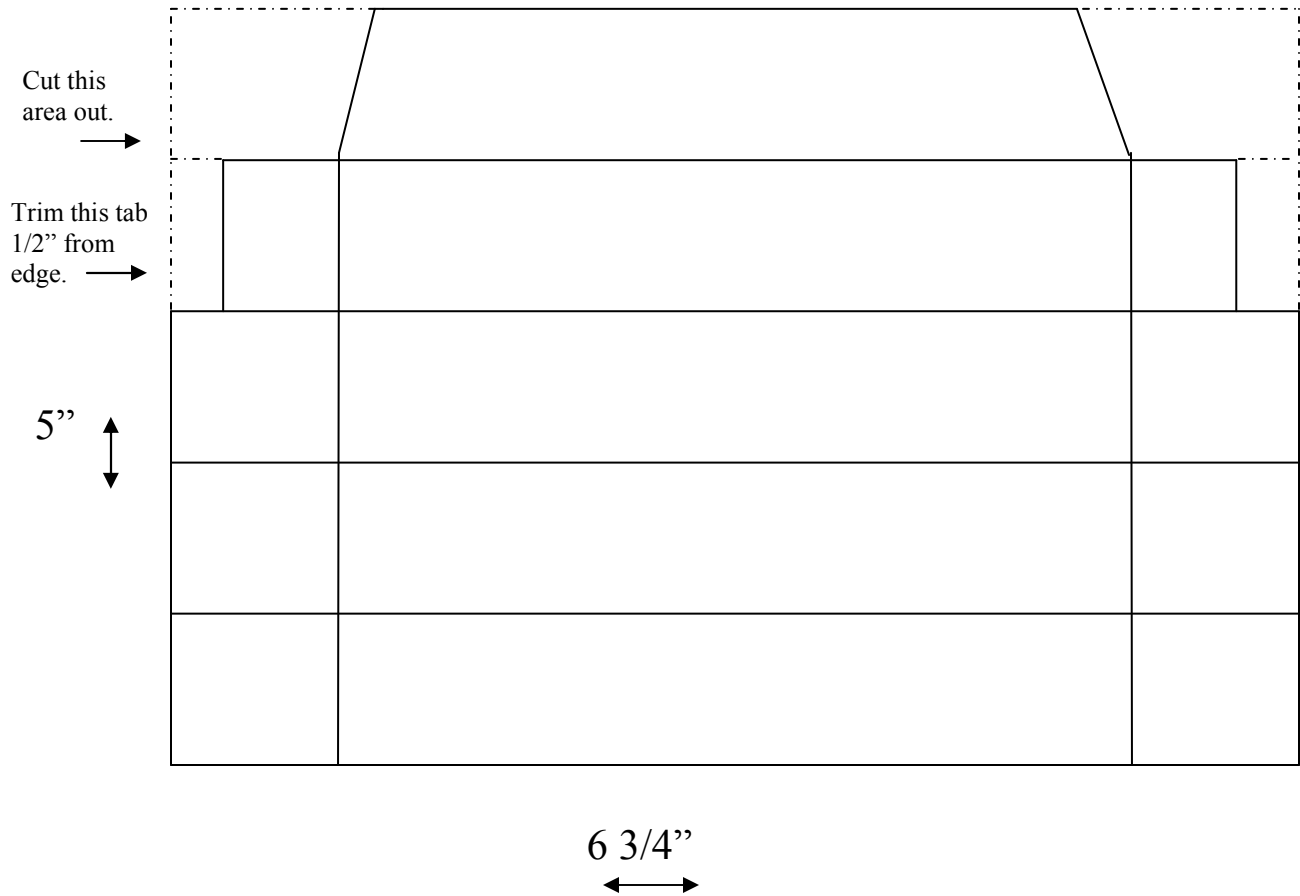


Hershey's Kiss Treat Box  
By Becky Fisher



Cut cardstock  $6 \frac{3}{4}$ " by 5" scoring on the short end at 1", 2", 3" & 4".  
On the long end, score at 1" and  $5 \frac{3}{4}$ ".

Trim tabs as shown to cut down on bulkiness and tape ends closed.  
This box will hold 5 Hershey's Kisses.