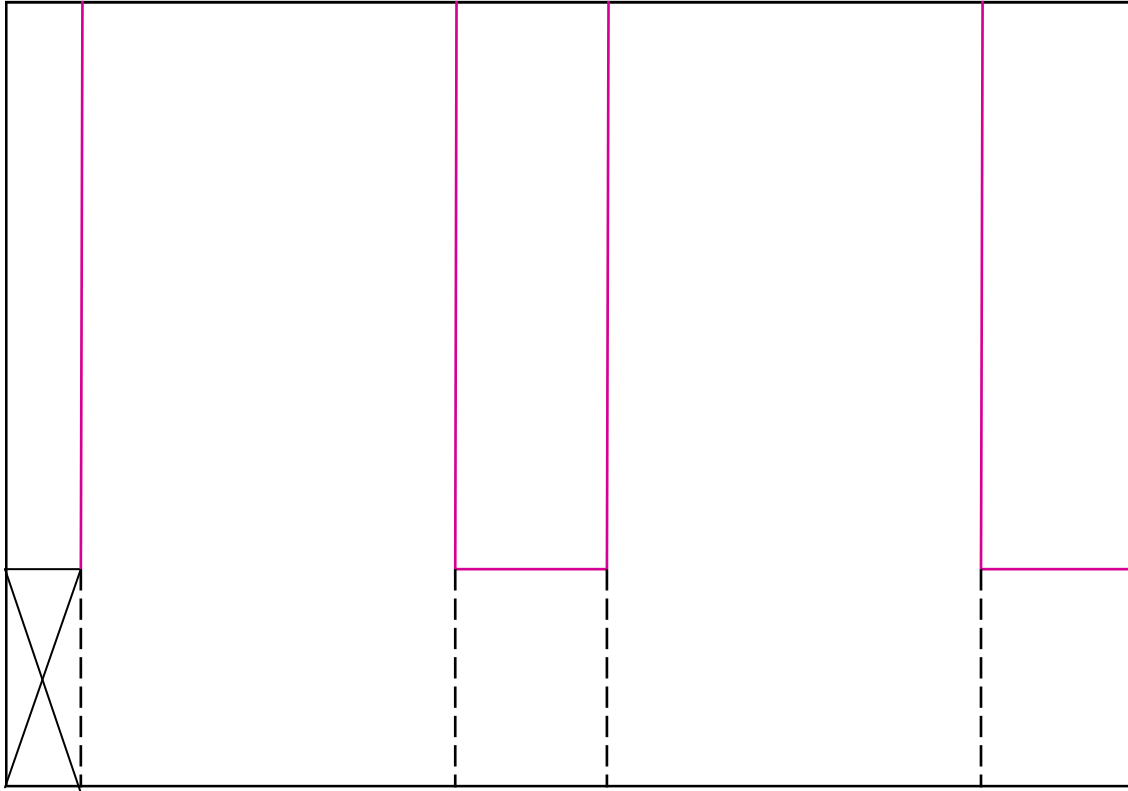


Sweetheart Slide Box

By Becky Fisher



1. Cut cardstock $7 \frac{1}{2} \times 5 \frac{1}{2}$ inches.
2. Score along the long side at $\frac{1}{2}$ in, 3 in, 4 in & $6 \frac{1}{2}$ in. The pink lines indicate the score lines. Turn cardstock and score the 1 inch sections at $4 \frac{1}{8}$ inches.
3. Cut on the dashed lines up to your score marks. These will be the flaps you fold in to create the bottom of your box. Your flaps will only overlap by a half inch but it is enough to close up the bottom of the box. This will be hidden because the long flaps are not scored and folded.
4. The band around the box is 8 in x 2 in.
5. Use eyelets or brads to secure the bottom flaps.
6. Slot punch to top of the box and run your ribbon through the slots.